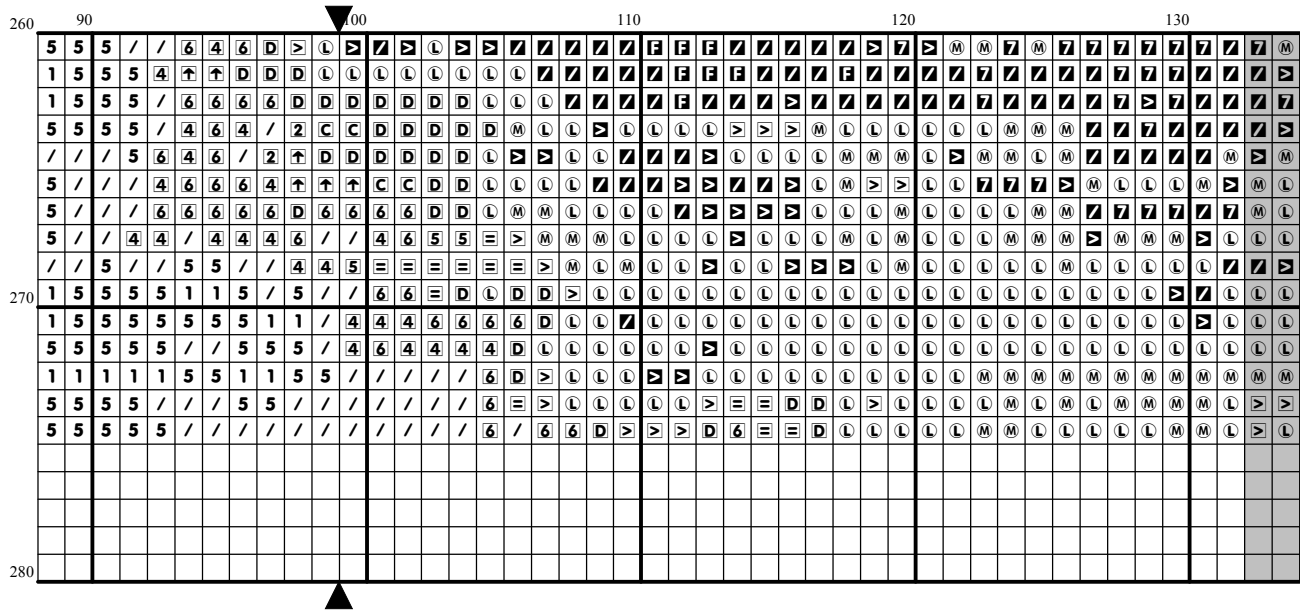
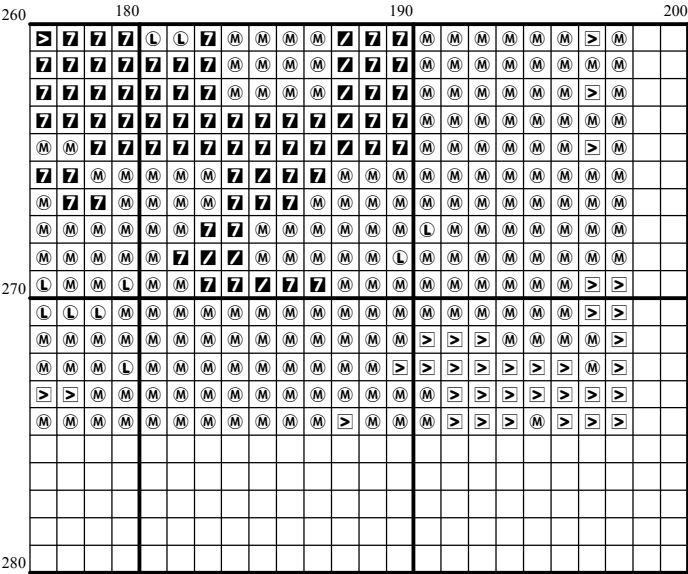


[illegible]

280



[illegible]



Instructions and Symbol Key for Design "PO 713 Windy Day"

Fabric: 14 count Cream Aida

Stitches: 198 x 275 **Size:** 14.14 x 19.64 inches or 35.92 x 49.89 cm

Colours: DMC

Use **2** strands of thread for cross stitch

Sym	No.	Colour Name	Sym	No.	Colour Name
①	159	Light blue grey	⚡	161	Ash blue
⑤	168	Mouse grey	↘	169	Pewter grey
⬇	224	Light dusty pink	└	300	Mahogany
◇	310	Black	●	317	Steel grey
↗	318	Granite grey	1	370	Medium mustard
⌂	413	Iron grey	┘	415	Chrome grey
2	422	Light oak	└	433	Chocolate brown
↑	437	Camel	↘	451	Shell pink grey
H	452	Pigeon grey	⑦	453	Turtledove grey
X	524	Light grey green	■	535	Stone grey
▀	610	Dark golden brown	/	612	String brown
6	613	Rope brown	└	640	Green grey
6	642	Earth grey	▹	644	Light green grey
→	645	Dark steel grey	↓	646	Platinum grey
>	647	Rock grey	L	648	Pepper grey
Y	712	Cream	D	738	Sahara cream
▣	739	Dune cream	⊙	746	Vanilla
⊕	762	Pearl grey	C	801	Mink brown
▣	822	Cotton cream	∩	838	Dark wood
—	839	Root brown	T	840	Hare brown
A	841	Deer brown	≡	842	Beige rope
Z	844	Pepper black	≡	869	Coffee brown
⌘	898	Teak brown	⑥	928	Light pearl grey
⊙	934	Algae green	•	935	Undergrowth green
L	936	Oaktree moss green	▽	938	Espresso brown
■	939	Dark navy blue	①	950	Beige
U	3021	Cliff grey	D	3023	Light platinum grey
Y	3024	Pale steel grey	V	3032	Dark antique silver
Ⓜ	3033	Antique silver	└	3041	Medium lilac
J	3042	Lilac	┘	3046	Rye beige
Ⓛ	3047	Silver birch beige	⊕	3072	Pale pearl grey
○	3371	Ebony	⑧	3743	Pale lilac
X	3756	Cloud blue	5	3782	Gingerbread brown
▀	3787	Wolf grey	▀	3790	Cappuccino brown
X	3799	Anthracite grey	≡	3858	Medium red wine
E	3859	Clay red	⊙	3860	Taupe mauve
4	3861	Light taupe	≡	3862	Mocha brown
5	3863	Otter brown	4	3864	Light mocha brown
⊙	3865	Winter white	7	3866	Garlic cream
F	ECRUT	ECRUT			

This chart has been designed and printed with our best intentions of being without mistakes. However, the possibility of human error, printing mistakes or the variation of individual stitching does exist, and we regret that we cannot be responsible for this.

Note: The shaded blocks on the chart represent overlapping stitches.
Copyright © Classic Cross Stitch 2006 All rights reserved.

Pattern Pages are in the following order plus the symbol key

1	2	3	4	5
6	7	8	9	10
11	12	13	14	15
16	17	18	19	20
21	22	23	24	25